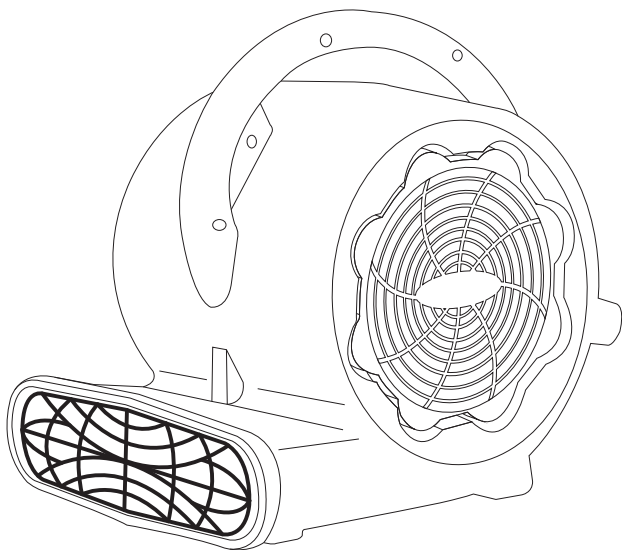


C43000-002H USER MANUAL



MODEL: C43000-002H

Minuteman International specializes in innovative design and manufacturing of reliable air movers, while providing flexible and efficient real-world solutions to meet our customer's changing needs. Our movers are small and lightweight yet powerful enough to meet your restoration, drying, and ventilation needs. Our products are made to be durable and high performing.

The contents of this manual are based on the latest product information available at the time of publication. We reserve the right to make changes or improvements to the machine without notice.

PREFACE

Thank you for your purchase of the industry standard for industrial equipment. Minuteman International takes great pride in offering the most dependable, reliable and best value in industrial equipment; we set the standard.

Our Customer Service department would like to hear from you. If you see any errors, omissions or something that needs clarification in this spare parts catalog please let us know. We are working hard toward perfection in our corner of the process to bring you the best you can buy. Please copy the form below, fill out and comment on how you found our catalog.

Thank you.

Name: _____

Title: _____

Company: _____

Address: _____

Country: _____

Type of equipment or model number: _____

Comments:

Please return to: Minuteman International, Inc.
14N845 U.S. Route 20
Pingree Grove, Illinois 60140 USA

Phone: (800) 323-9420

Email: tech@minutemanintl.com

GENERAL SAFETY WARNINGS

- Do not operate your air mover with a cut or frayed cord. Do not run power cord under carpeting. Do not cover power cord with rugs, runners, or similar covers. Place power cord away from traffic area to prevent tripping.
- Do not unplug your unit by pulling on its cord. Firmly grasp the plug and pull it out of the wall socket or power receptacle.
- The plug has a safety ground pin installed that must not be removed. If the pin is damaged or missing, replace the power cord before further use. Visually inspect the power cord before each use. Ignoring these safety precautions may result in a fire or electrical shock.
- Always use a GFCI outlet. Contact a qualified electrician for verification and/or installation of a GFCI receptacle if necessary.
- To reduce the risk of fire or electrical shock, do not use this fan with any after-market or solid-state speed control device.
- To prevent electric shock, do not operate the unit in standing water. Never plug in or unplug the unit with wet hands or while standing in water.
- Do not drop the unit. Sudden and severe impact may result in damage to internal components.

- Do not operate unit with the safety grills, existing covers, shields, or housing removed. Personal injury may result. Do not stick fingers or objects into the safety grills.
- To avoid injury, do not direct air flow at face or body. Do not allow children to play with or around unit at any time.
- Do not move or carry air mover while unit is operating.
- Drop cloths or other loose fabrics can be drawn against the unit thereby restricting airflow. This may cause the unit to overheat. Keep area around unit free and clear of any obstructions.
- Save the shipping carton in case your air mover needs to be returned.
- This unit should never be serviced or cleaned while it is plugged into a live electrical power source.
- Keep away from heat, chemicals, and other potentially hazardous materials.
- Use equipment as instructed and with manufacturer's recommended accessories.
- Do not operate this equipment while impaired, distracted, or under the influence of alcohol, drugs, or medication.

OPERATING INSTRUCTIONS

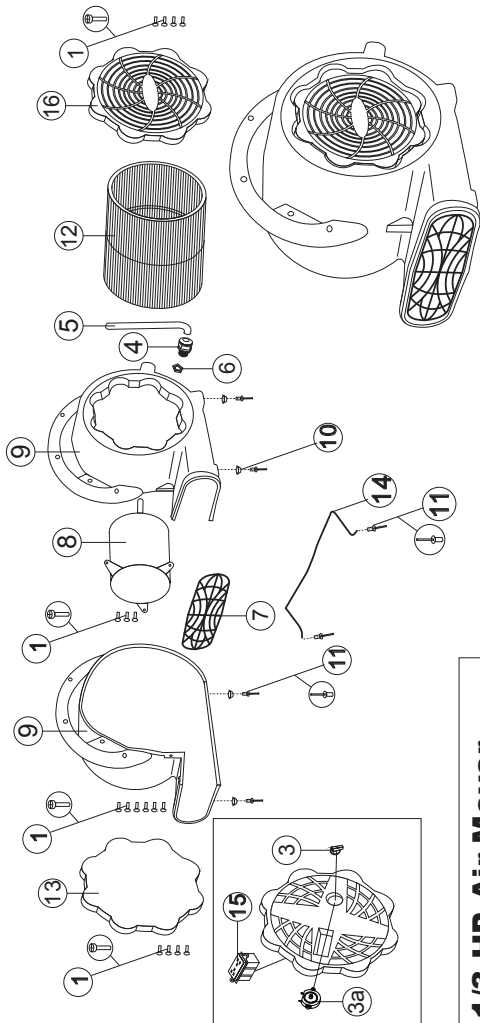
When operating the unit, please adhere to the following:

- Inspect unit upon receipt for any freight damages. Be sure to keep all original packaging if return process is required. If you discover any damages, please contact Minuteman International.
- Check the machine for any obstructions in the fan or airflow areas before plugging the unit in for operation.
- Set the machine in the desired orientation for operation.
- Ensure the switch is in the (OFF) position.
- Plug the power cord into a GFCI outlet.
- Do not use an extension cord.
- Do not use an adapter.
- Check GFCI protection by pushing “TEST” button. If operating properly, “RESET” button will pop out. Remember to press “RESET” button after testing to use machine.
- Do not plug more than a total of 12 amps into the GFCI outlet.
- Turn unit on
- When ‘daisy-chaining’ the machines, turn one unit on at a time to prevent excessive current flood from starting multiple units at one time.
- If red LED begins to flash, the unit has lost GFCI protection and should be replaced immediately.

USER SERVICING

Never service or clean this unit while it is plugged into outlet.

SYMPTOM	PROBLEM	SOLUTION
Unit will not turn on	<ul style="list-style-type: none">• Not plugged in• Switch is worn• Tripped circuit breaker• Short in power cord• Capacitor on motor is damaged	<ul style="list-style-type: none">• Plug unit into proper outlet• Replace switch• Reset breaker• Replace power cord or replace cord end• Replace motor
Air mover will not operate on all speeds	<ul style="list-style-type: none">• Switch is worn• Capacitor on motor is worn or damaged	<ul style="list-style-type: none">• Replace switch• Replace motor
Air mover runs or starts slowly	<ul style="list-style-type: none">• Capacitor terminal may be shorting	<ul style="list-style-type: none">• Replace motor
The fan is rubbing	<ul style="list-style-type: none">• Fan is off-center	<ul style="list-style-type: none">• Replace fan• Turn off motor and unplug unit then remove foreign object• Replace motor• Replace fan



1/3 HP Air Mover

ref#	description	qty
1. APSFH	screw	17
3. APSKNB	cap	1
3a. APSRT	Rotary Switch (internal)	1
4. APSRB	strain relief-iq	1
5. APC-25	power cord	1
6. APNH	nut,hex	1

ref#	description	qty
7. APGA300E	front guard	1
8. APMT-B	AC motor	1
9. APH300RM	housing - blower	2
10. APRF	rubber foot	4
11. APRVT	rivet	6
12. APFV-01	blower wheel,cage	1

ref#	description	qty
13. APGA300S	guard,intake	1
14. APA300WS	Kickstand	1
15. APGFCL	GFCI Breaker	1
16. APGA300S	Guard, Intake switch plate A300	1

HEPA FILTER COMPONENTS:

ref#	description	qty
110038	Filter-hepa 10"	2
390005	Gasket	2
740188	Toggle Switch	1

Minuteman International Made Simple Commercial Limited Warranty REVISION Q EFFECTIVE 4/1/2018

Minuteman International, Inc. warrants to the original purchaser/user that the product is free from defects in workmanship and materials under normal use. Minuteman will, at its option, repair or replace without charge, parts that fail under normal use and service when operated and maintained in accordance with the applicable operation and instruction manuals. All warranty claims must be submitted through and approved by factory authorized repair stations.

This warranty does not apply to normal wear, or to items whose life is dependent on their use and care, such as belts, cords, switches, hoses, rubber parts, brushes, electrical motor components or adjustments. Parts manufactured by Minuteman are covered by and subject to the warranties and/or guarantees of their manufacturers. Please contact Minuteman for procedures in warranty claims against these manufacturers.

Special warning to purchaser – Use of replacement filters and/or pre-filters not manufactured by Minuteman or its designated licensees, will void all warranties expressed or implied. A potential health hazard exists without original equipment replacement.

All warranted items become the sole property of Minuteman or its original manufacturer, whichever the case may be.

Minuteman disclaims any implied warranty, including the warranty of merchantability and the warranty of fitness for a particular purpose. Minuteman assumes no responsibility for any special, incidental or consequential damages.

This limited warranty is applicable only in the U.S.A. and Canada, and is extended only to the original user/purchaser of this product. Customers outside the U.S.A. and Canada should contact their local distributor for export warranty policies. Minuteman is not responsible for costs or repairs performed by persons other than those specifically authorized by Minuteman. This warranty does not apply to damage from transportation, alterations by unauthorized persons, misuse or abuse of the equipment, use of non-compatible chemicals, or damage to property, or loss of income due to malfunctions of the product.

If a difficulty develops with this machine, you should contact the dealer from whom it was purchased.

This warranty gives you specific legal rights, and you may have other rights which vary from state to state. Some states do not allow the exclusion or limitation of special, incidental or consequential damages, or limitations on how long an implied warranty lasts, so the above exclusions and limitations may not apply to you.

Model	Parts	Labor	Poly	Travel**
Cord Electric Group	5yrs	3yrs	12yrs	90 days
Battery Auto Scrubbers (incl. on board charger)	5yrs	3yrs	12yrs	90 days
Battery and Manual Sweepers	3yrs	3yrs	12yrs	90 days

Exceptions.....

Model	Parts	Labor	Poly	Travel**
Port A Scrub, all models (incl. on board charger)	1yr	6months	12yrs	90 days
A3S Blower	1yr	1yr	0	0
Phenom Dual Motor Upright Vacuums	2yrs	2yrs	0	0
Explosion Proof Vacuum	1yr	1yr	0	0
Propane Burnisher	1yr	1yr	0	90 days
E14BQP and E14115 scrubber	1yr	1yr	12yrs	90 days
EZ-Mop	1yr	1yr	0	90 days
ROS-17	1yr	1yr	0	90 days
**Travel, 2 hours max				

<i>Stand-alone Battery Chargers:</i>	One year
<i>Replacement Parts:</i>	Ninety days
<i>Batteries:</i>	0-3 months full replacement, 4-12 months pro-rate
<i>Polypropylene Plastic Tanks:</i>	12yr warranty, no additional labor

“Excellence Meets Clean”

**Minuteman is a Full Line Manufacturer of Sweepers and Scrubbers,
for Industrial Facilities.**

14N845 U.S. Route 20, Pingree Grove, IL 60140 USA
Phone (800) 323-9420 - www.minutemanintl.com
A Member of the Hako Group

040820